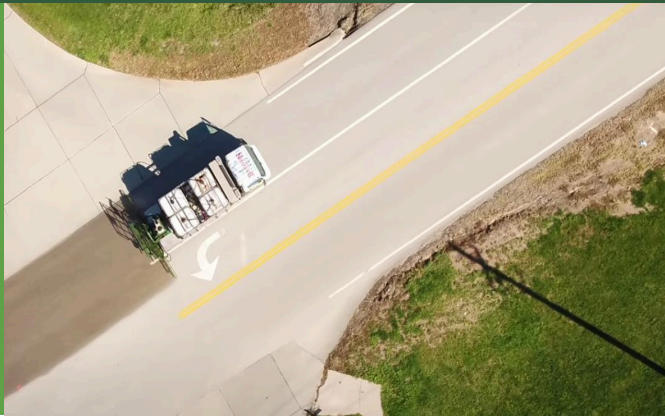


RePlay™

BioSpan



A biobased preservation agent to prolonging the use life of asphalt pavement

RePlay® is a 77% biobased asphalt preservation agent designed to penetrate and improve pavement. Its non-toxic formula is spray-applied using a computer-controlled system for precision application and can cure within 30 minutes. RePlay’s fast-acting formula introduces nano-polymer technology to enhance the asphalt matrix, helping resist moisture penetration, resist freeze-thaw stress, improve flexibility, and maintain friction safety.

Typical Uses	Asphalt highways, driveways, streets, parking lots, shoulders, trails, rumble strips, curbs. RePlay can work on any untreated asphalt to improve the use life and safety of the surface.
Packaging	Available in 275-gallon totes and 6,600-gallon tankers
Coverage	1 tote covers 2.2 lane miles (at 0.015 gal/sq yard and 14-foot lane widths)

Key Features		Benefits
Non-toxic and 77% biobased	Adds 7 new polymers to matrix	Biobased ensures worker and environmental safety
Penetrates asphalt surfaces between 3/4 and 1 1/4 inches	Protects against moisture penetration and freeze-thaw cycling stress	Improved strength and improved lifespan
Maintains or improves surface friction and driver safety factor	No need to re-stripe	Save material with precision application
Generally, cures within 30 minutes	Carbon-negative life cycle	Shorten traffic disruptions with rolling-lane application



Computer-Controlled Spray Rates



Fold-out Spray Wings



Will Not Cover Pavement Markings

General Product Specifications

Appearance	Brown to black thin liquid, slight citrus fragrance
pH	3.5-5.0
Specific Gravity	0.8820-0.8890
Flash Point	210°F+ Tag Closed Cup
Shelf Life	3 years in sealed manufacturer's container
Cure Time	Average 30 minutes

BioSpan Spray System

- Truck-mounted, one-man operation from cab
- Computer-controlled spray rate
- Auto-adjust pressure and rate with variable speeds
- Attached spray wand for tight corners and spaces
- 8-foot main boom, 2 foldable wings to reach full 14-foot lane widths

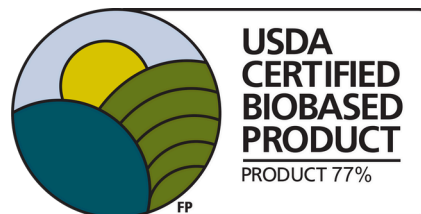


- 5-gallon tank for product cleaner
- Product recirculation system
- Manually adjusted, easily removed from vehicle and stored

How to Use RePlay

1. The asphalt pavement surface must be dry and swept clear of debris. Low to no visible degradation is recommended.
2. RePlay shall be applied as is. RePlay should not be diluted for any application.
3. RePlay is spray-applied onto highways using the BioSpan computer-controlled Spray system.
4. Application rate ranges between 0.015-0.02 gallons per square yard for pavements with PCI above 60% (in good condition).
5. Ranges may increase between 0.020-0.03 in special circumstances (rumble strips, centerline joints, oxidation)
6. Surface temperature must be above 40F.
7. RePlay begins curing in 15-30 minutes. RePlay applications may accept traffic at the discretion of the applicator.

Wear protective eyewear, gloves and close-toed shoes at all times during application. The solution is safe for both the user and the environment.



See RePlay in action



RePlay is a patented product with registered mark owned by BioSpan Technologies, Inc.

Contact Us

For more information, bulk pricing, or to place an order, contact our sales team at (800) 730-8980 or visit www.biospantech.com/replay

